

# Welcome



**CEDIA**

*Friday 15 February 2013*

CELEBRATING  
GREENMOUNT  
CENTENARY

1912  
2012

# College of Agriculture, Food and Rural Enterprise (CAFRE)

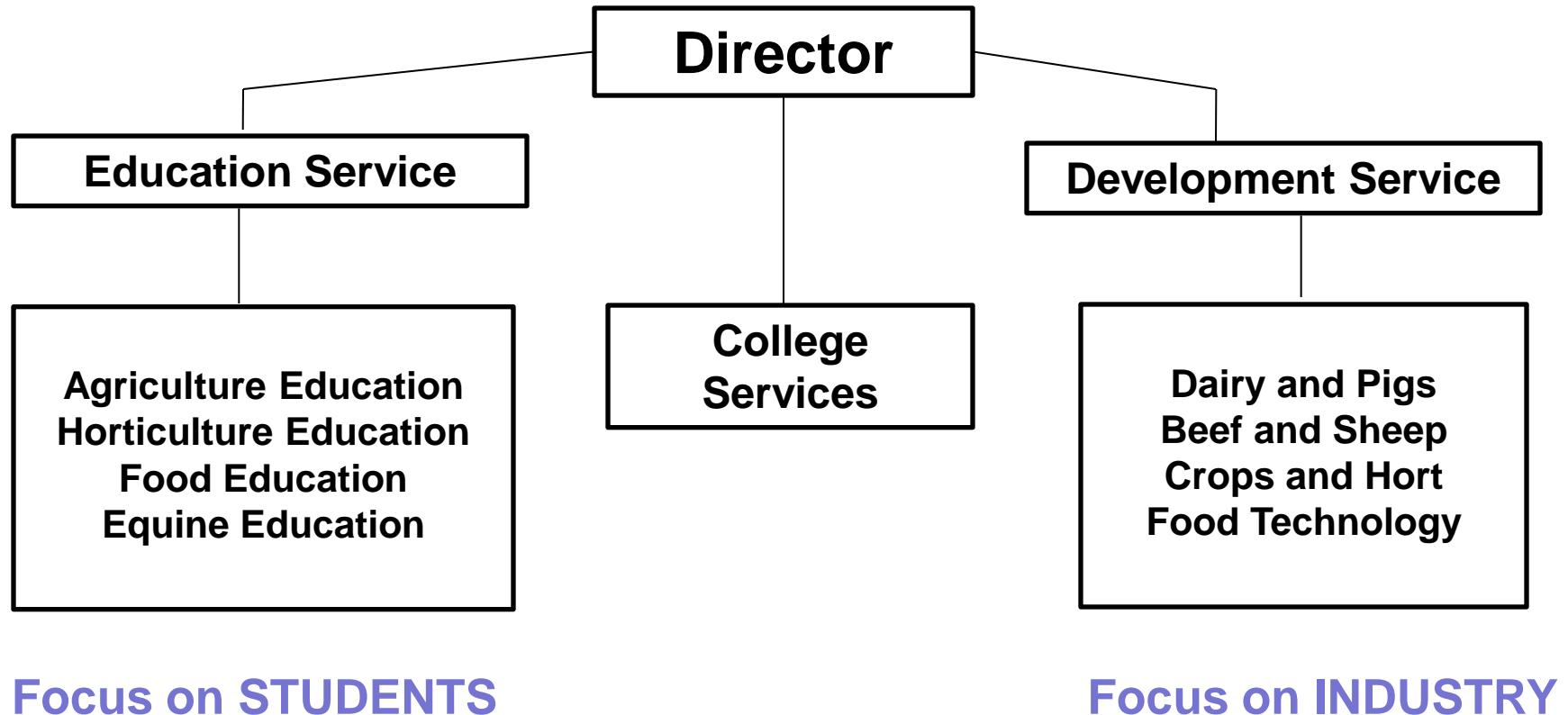
- Integral part of DARD
- Comprises: -
  - Enniskillen Campus
  - Greenmount Campus
  - Loughry Campuseach with a specialist focus



# CAFRE Aim

*To develop the competences and values of people **entering** and **working** in the agri-food industry and to provide them with the capability to contribute to the sustained economic growth of the industry and development of the rural society.*

# CAFRE Structure



# Enniskillen Campus

Equine Studies

Equine Management

Horse Care

Farriery

Agriculture (p/t)



# Loughry Campus



Food Technology  
Food Supply Management  
Packaging  
Communications  
Rural Enterprise

CELEBRATING  
GREENMOUNT  
CENTENARY

1912  
2012



# Greenmount Campus

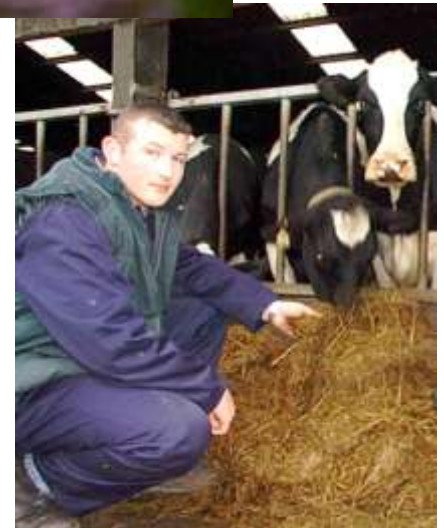
Agriculture

Amenity Horticulture

Floristry

Land Based Technology

Veterinary Nursing



CELEBRATING  
GREENMOUNT  
CENTENARY

1912  
2012

# Key Trends

- CAFRE enrolments have grown by 10% over the last ten years.
- In 2012/13 year 1700 students were enrolled.
- Recent upsurge in Agriculture and Agricultural Mechanisation enrolments.
- Increased demand for Food programmes.
- Stable enrolments in Horticulture and Equine



# Development Service

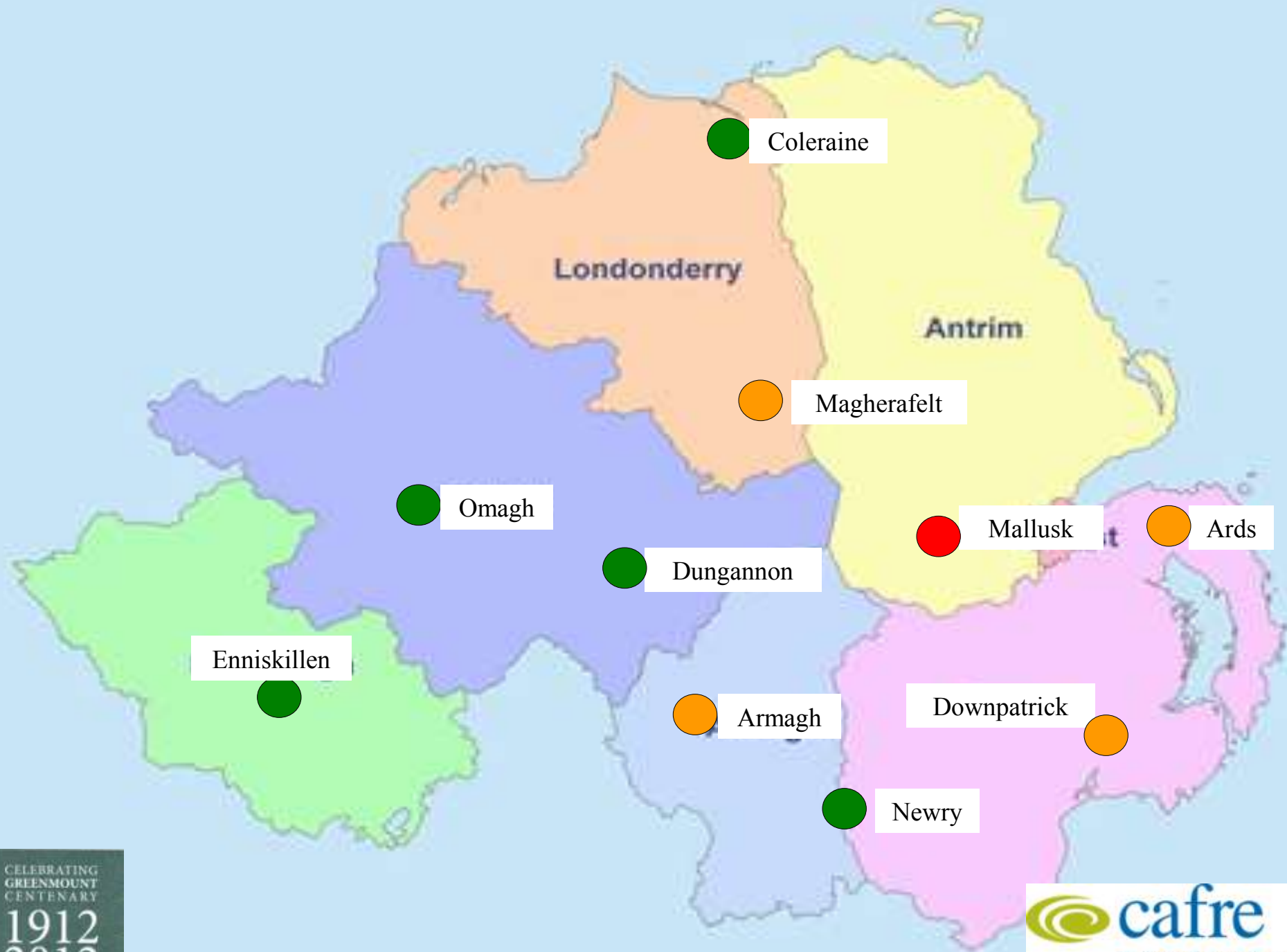
*- Improving Competitiveness*

- Centrally managed, locally delivered.
- Working with individuals and with groups.
- Specialist advisers:
  - Dairying and Pigs
  - Beef and Sheep
  - Crops and Horticulture
  - Rural Enterprise
  - Food Technology

# Development Service Products

- **Benchmarking**
- **Training**
  - Short Courses
  - *'Challenges'*
- **Knowledge & Technology Transfer**
- **Technical Support**





# Development Service – Technical Support

- Farm Advisory System (FAS)
- New Entrants Scheme (NES)
- NIRDP – Technical Expertise
- Renewable Energy
- Aphis On-Line (AOL)

# Development Service

- Outcomes
  - Training delivered to over 15,000 people within the agri-food sector
  - Over 1200 agri-food businesses adopt technology
  - Over 1000 farm businesses benchmark performance