



Northern Ireland agricultural industry: An overview



Department of
**Agriculture and
Rural Development**

www.dardni.gov.uk

AN ROINN
Talmhaíochta agus
Forbartha Tuaithe

MAONSTRÁID
Fuirms an
Kintra Fordeáin

The Importance of the Agricultural Industry

- 1.1% of Northern Ireland GVA
- 3.3% of Northern Ireland total employment
- 73% of total Northern Ireland land area



Department of
Agriculture and
Rural Development

www.dardni.gov.uk

AN tOIBIN
Talmhaíochta agus
Forbartha Tuaithe

MAINTIENE O
Fuirms an
Kintra Fordèrin

Northern Ireland Farm Structure



- 0.991 million hectares farmed in total
- Less than 6% of agricultural land is cropped
- 24,300 farms, average farm size = 41 ha
- 5,800 farms are large enough to provide full-time employment for one or more people



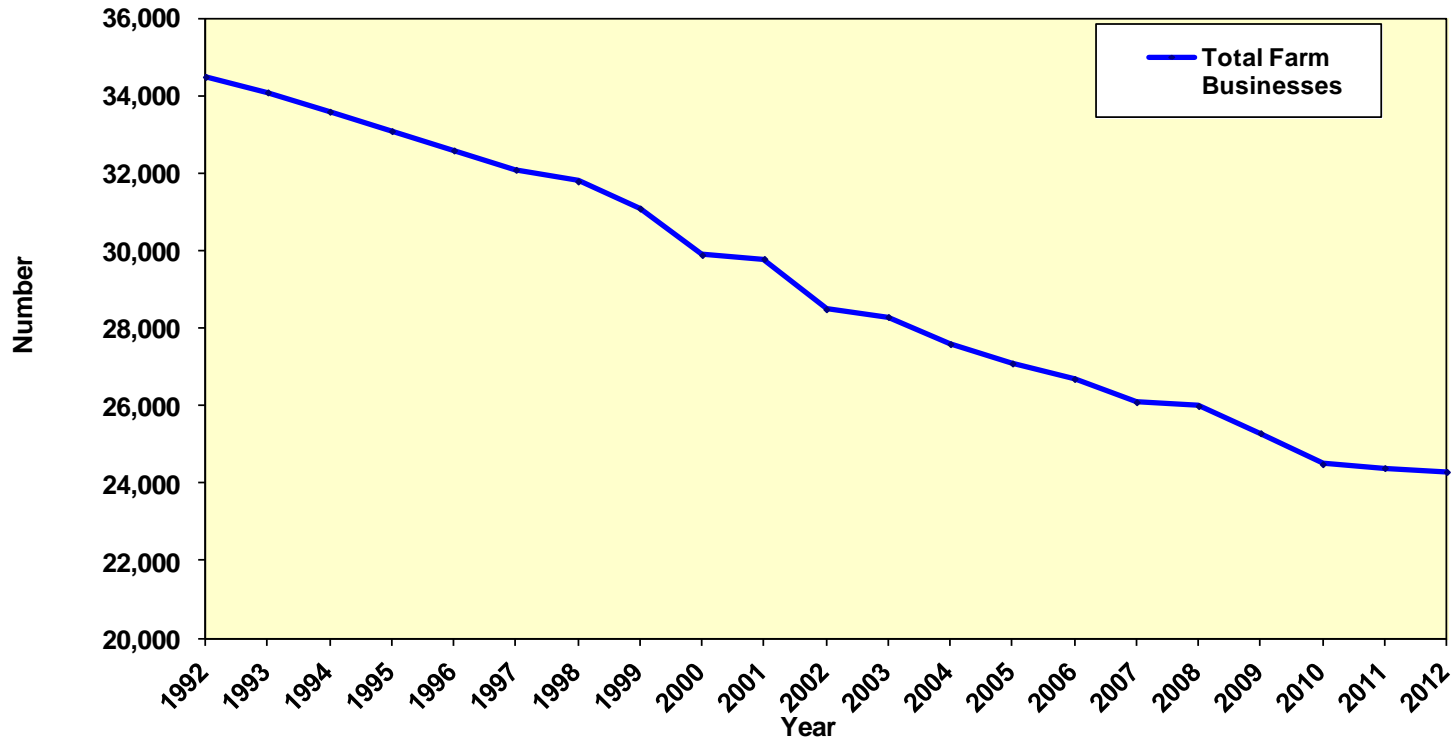
Department of
Agriculture and
Rural Development

www.dardni.gov.uk

AN RINN
Talmhaíochta agus
Forbartha Tuaithe

MAINTHE B
Fairs an
Kintra Fòrdèrin

Total Farms, Northern Ireland 1992 - 2012



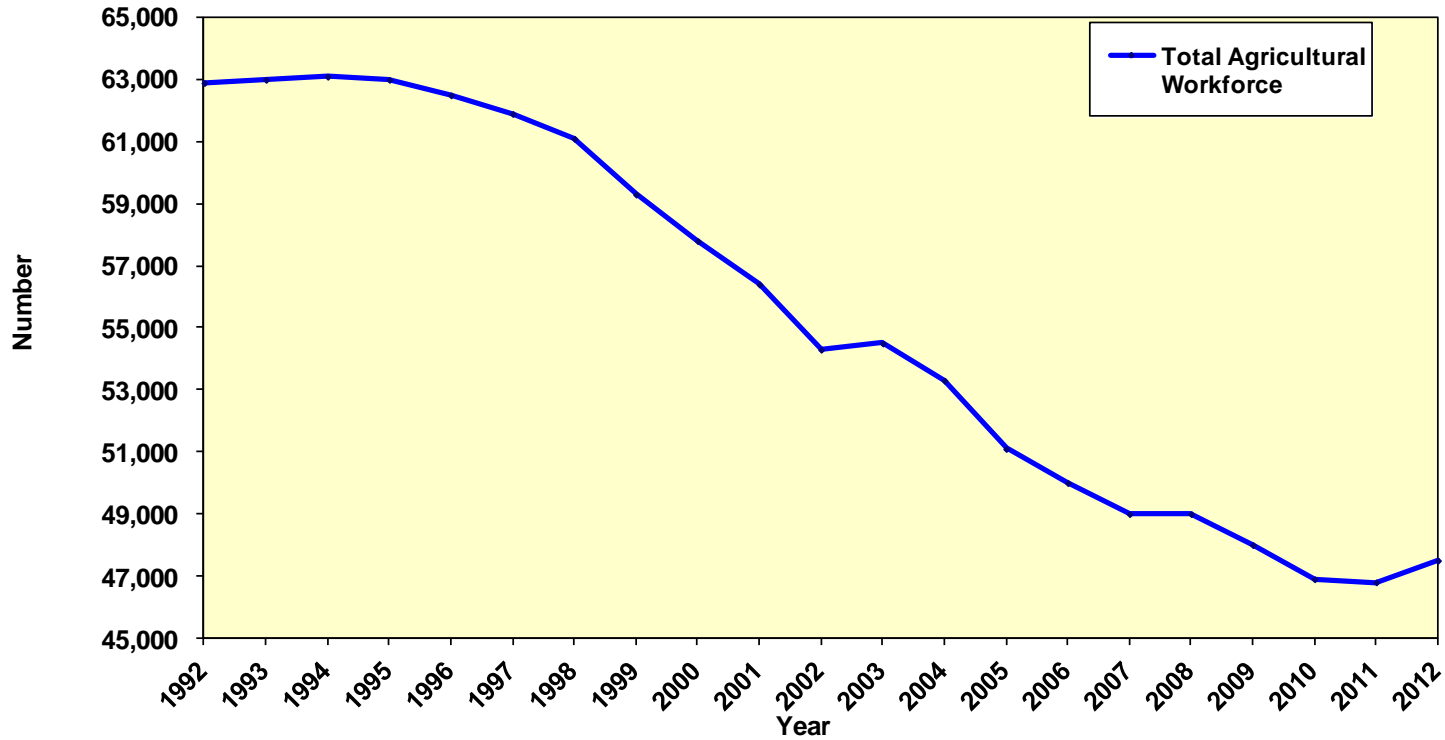
Department of
**Agriculture and
Rural Development**

www.dardni.gov.uk

AN tOIRI
Talmhaíochta agus
Forbartha Tuaithe

MAINTHE O
Fairs an
Kintra Fòrdèrin

Total Agricultural Workforce (Head Count) 1992 - 2012



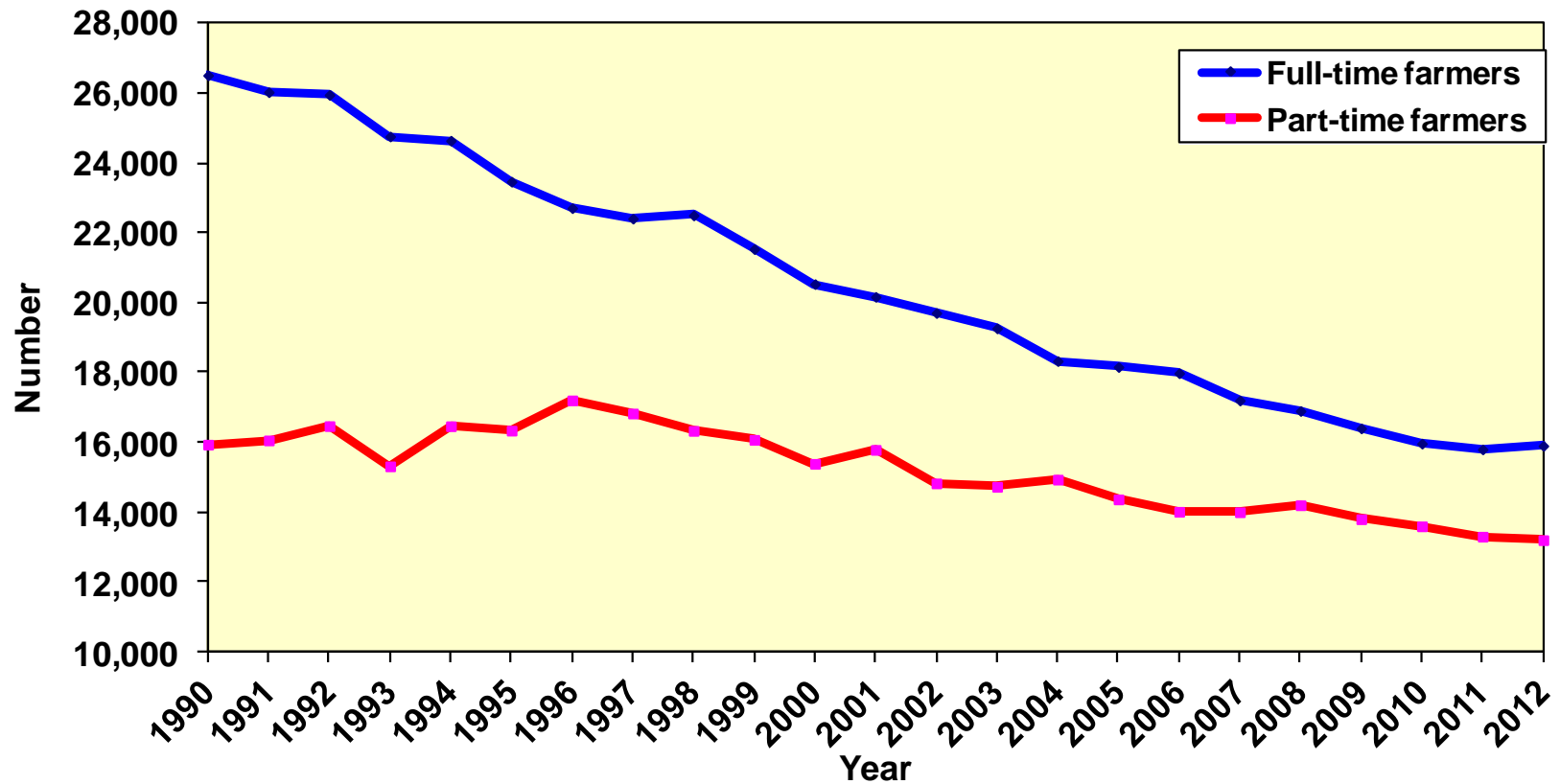
Department of
**Agriculture and
Rural Development**

www.dardni.gov.uk

AN tOIGH
Talmhaíochta agus
Forbartha Tuaithe

MAINTIENE O
Fairs an
Kintra Fordèrin

Number of Full-Time and Part-Time Farmers, 1990 - 2012



Department of
Agriculture and
Rural Development

www.dardni.gov.uk

AN RINN
Talmhaíochta agus
Forbartha Tuaithe

MAONSTRÉ B
Fairs an
Kintra Fordèrin

Number of Farms by Business Size and Type 2012

	Farm business size				Total
	Very small	Small	Medium	Large	
FARM TYPE:					
Cereals	229	49	7	7	292
General cropping	278	34	29	44	385
Horticulture	117	48	37	84	286
Pigs	55	33	26	62	176
Poultry	224	194	75	78	571
Dairy	327	785	578	972	2,662
Cattle & sheep: LFA	12,623	1,224	247	127	14,221
Cattle & sheep: lowland	3,850	528	114	73	4,565
Mixed	366	116	63	90	635
Other type	372	65	34	21	492
All types	18,441	3,076	1,210	1,558	24,285



Department of
Agriculture and
Rural Development

www.dardni.gov.uk

AN RINN
Talmhaíochta agus
Forbartha Tuaithe

MAHAYTHRE D
Fairs an
Kintra Fordèrin

Average Enterprise Size

	Northern Ireland (2012)	EU 15 (2007)
Dairy Cows	81	37
Beef Cows	18	21
Sheep	224	168
Pigs	780	255
Laying Hens	15,000	1,500
Broilers	43,000	440
Cereals (ha)	13.8	16.5
Potatoes (ha)	7.2	2.2



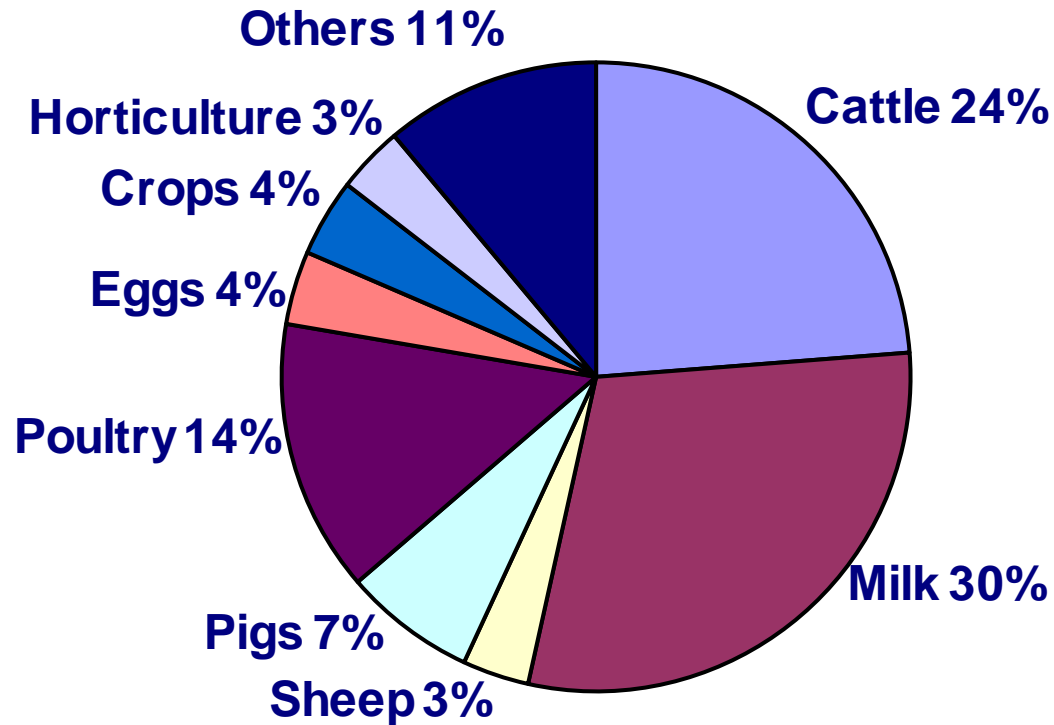
Department of
Agriculture and
Rural Development

www.dardni.gov.uk

AN RINN
Talmhaíochta agus
Forbartha Tuaithe

MAINTHE B
Fuirms an
Kintra Fordèrin

Share of Gross Output 2012



Department of
Agriculture and
Rural Development

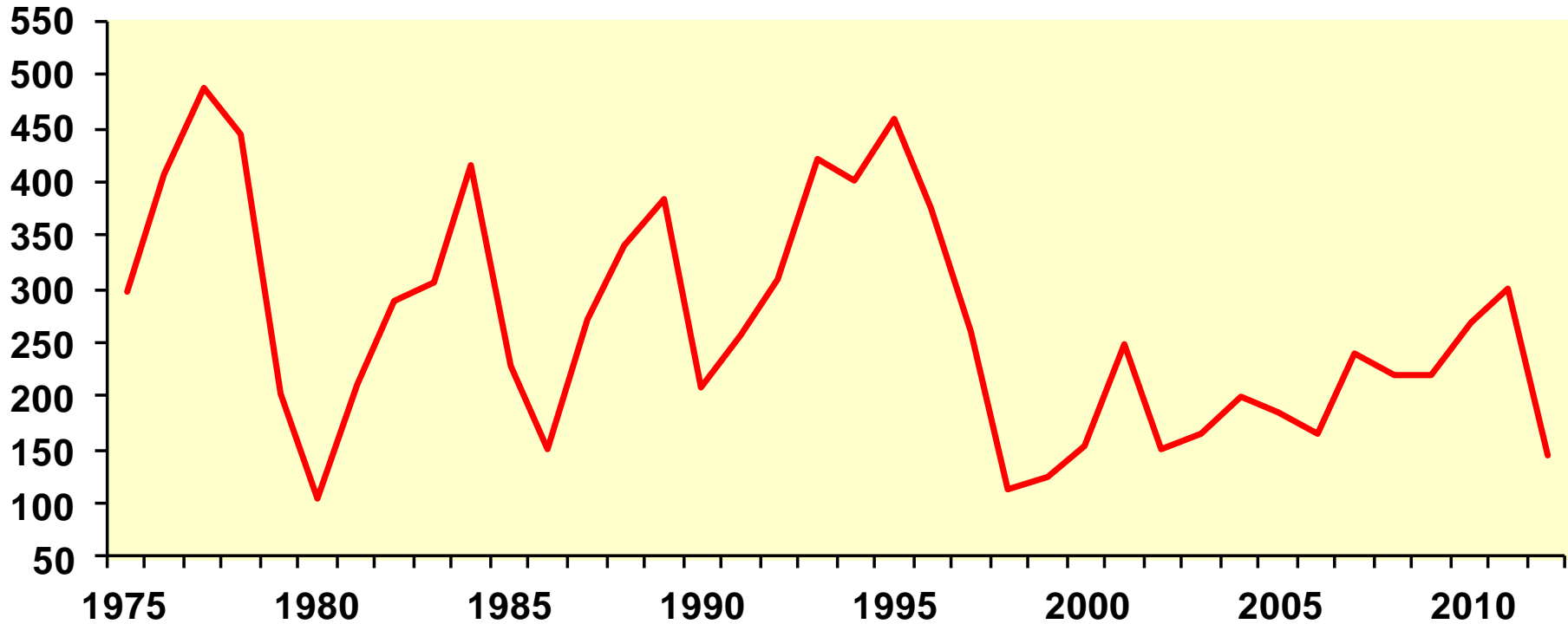
www.dardni.gov.uk

AN RINN
Talmhaíochta agus
Forbartha Tuaithe

MAINTHE O
Fairs an
Kintra Fòrdèrin

Total Income From Farming (real terms 2012 prices)

£m



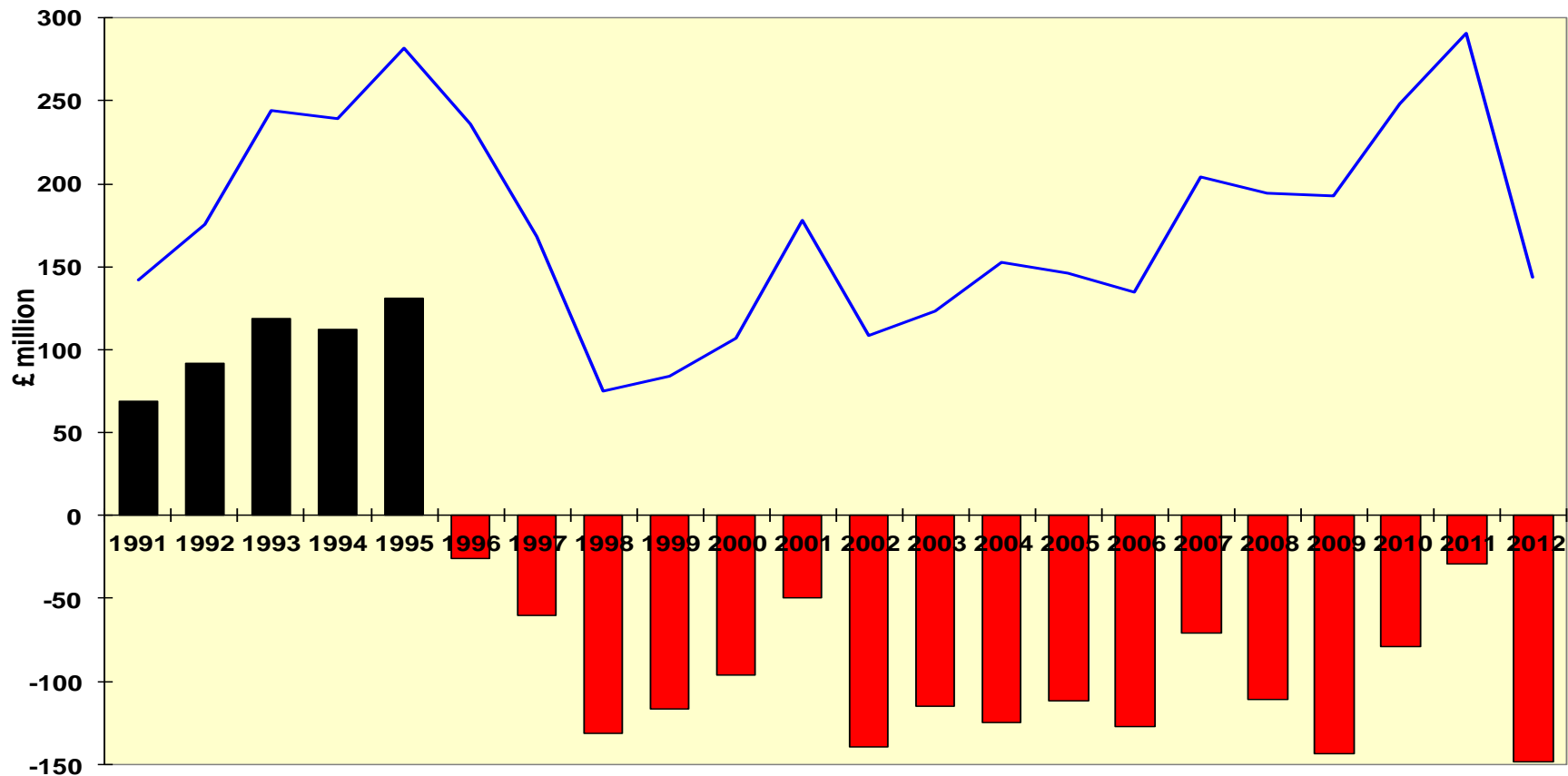
Department of
Agriculture and
Rural Development

www.dardni.gov.uk

AN RINN
Talmhaíochta agus
Forbartha Tuaithe

MAINTIENE O
Fairs an
Kintra Fòrdèrin

Northern Ireland Total Income from Farming With and Without EU Direct Payments, 1991-2012



Department of
**Agriculture and
Rural Development**

www.dardni.gov.uk

AN ROINN
Talmhaíochta agus
Forbartha Tuaithe

MAONSTRYHE II
Fairsins an
Kintra Fordeáin

Farm Business Income by Farm Type

Farm Type	2011/12	2012/13 (forecast)	% change
Cereals	26,856	22,244	-17
Dairy	58,124	27,462	-53
Cattle & Sheep (LFA)	23,091	19,477	-16
Cattle & Sheep (lowland)	18,762	16,495	-12
Pigs	37,161	25,383	-32
Mixed	52,301	45,012	-14
All types	34,184	23,237	-32

Source: Farm Business Survey



Department of
Agriculture and
Rural Development

www.dardni.gov.uk

AN tSúil
Talmhaíochta agus
Forbartha Tuaithe

MAINTIÚR
Fairs an
Kintra Fordeirín